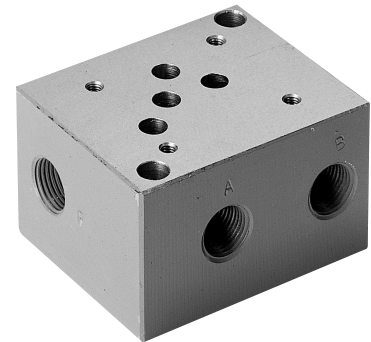


MANIFOLD BLOCK

SANDWICH PLATE DESIGN MFB03 SIZE 10

SPECIFICATION :

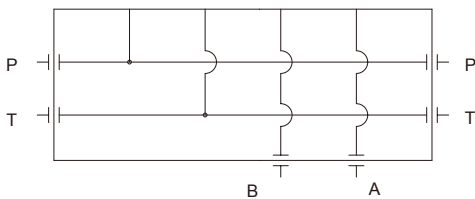
Maximum Flow Rate	100 l/Min (26.5 GPM)
Maximum working pressure	320 Bar (4570 PSI)
Ambient Temperature Range	-20°C ~ +50°C
Hydraulic Fluid Temperature Range	-20°C ~ +70°C
Hydraulic Oil	ISO VG32, 46, 68
Mounting Pattern	ISO 4401-AC-05-4-A



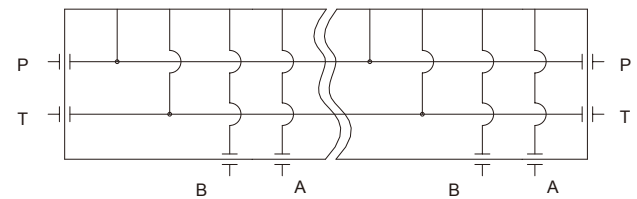
Model: MFB-03-1-10

HYDRAULIC CONFIGURATION:

■ MFB-03-1-10



■ MFB-03-*-10



ORDERING CODE :

M FB - 03 - 1 - 10 - **
 1 2 3 4 5 6

1 SANDWICH PLATE DESIGN

2 MANIFOLD BLOCK

3 NOMINAL VALVE SIZE:

NG 10, CETOP 5 and ISO 4401-05 (NFPA-D05/DIN 24340)

4 NUMBER OF CONTROLS IN VERTICAL STACKING DESIGN

2: for 2 controls

3: for 3 controls

4: for 4 controls

5: for 5 controls

6: for 6 controls

5 DESIGN NUMBER

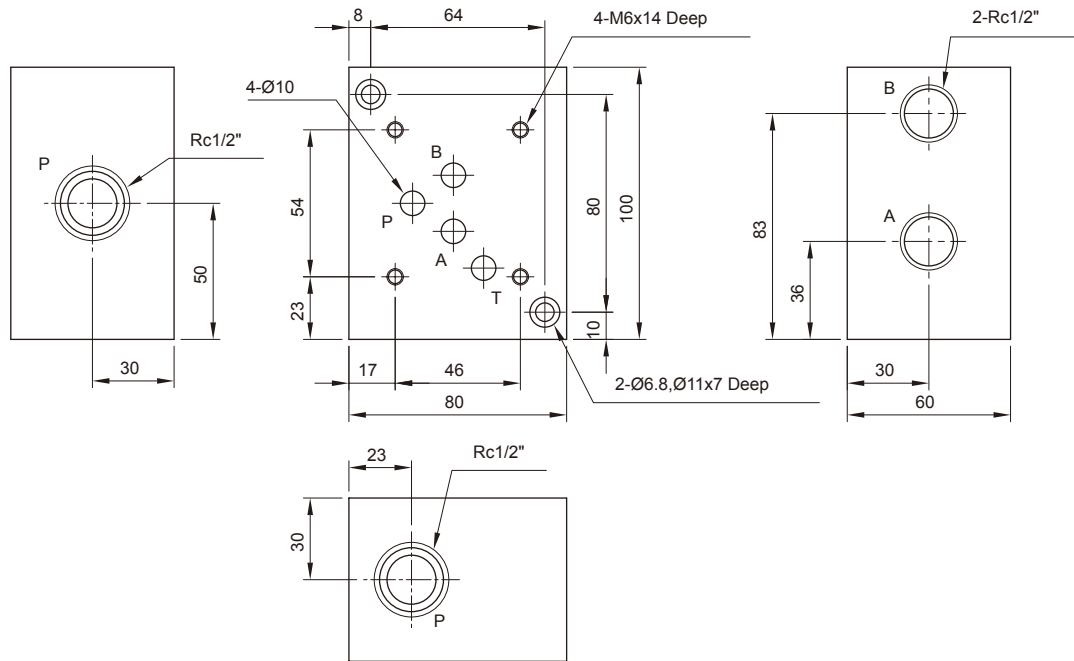
6 OPTIONAL INQUIRY

MANIFOLD BLOCK SANDWICH PLATE DESIGN MFB03 SIZE 10

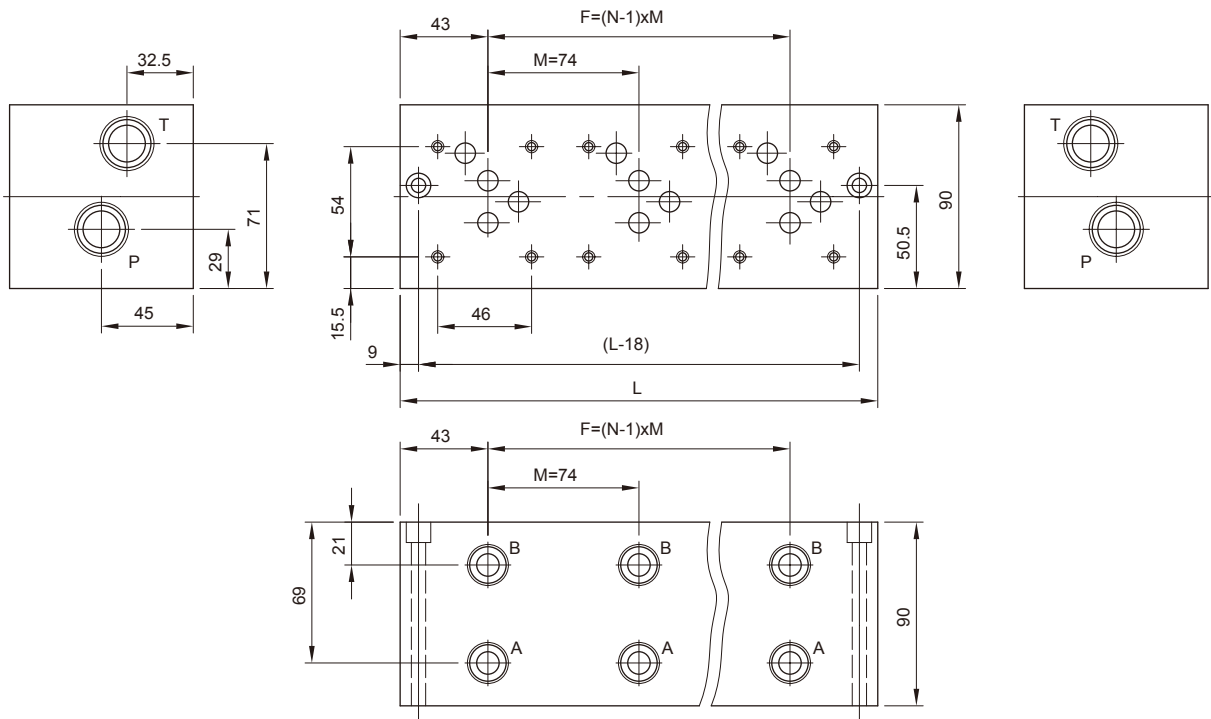
DIMENSIONS :

■ MFB-03-1-10

Weight:3kg



■ MFB-03-* -10



Types	N	F	L	A	B	P	T	Weight
MFB-03-2-10	2	74	164	Rc 1/2"		Rc 3/4"		10.4 kg
MFB-03-3-10	3	148	238					15.0 kg
MFB-03-4-10	4	222	312					19.7 kg
MFB-03-5-10	5	296	386					24.4 kg
MFB-03-6-10	6	370	460					29.0 kg

