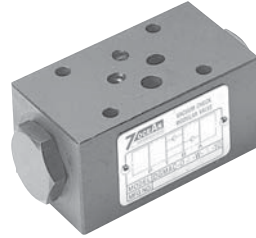


# VACUUM CHECK VALVE

## SANDWICH PLATE DESIGN MAC02 SIZE 6

**FEATURES :**

- Highest performance in NG 6
- Sandwich plate design
- Direct operated check valve
- Be incorporated between A, B ports and T port
- This check valve of a certain type can be used for suction
- Connections to DIN, ISO and CETOP



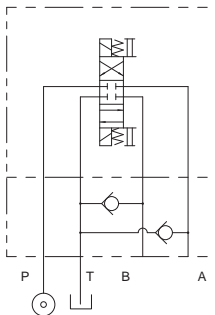
**Model: MAC-02-W-10**

**SPECIFICATION :**

|                                   |                           |
|-----------------------------------|---------------------------|
| Maximum Flow Rate                 | 50 l/Min (13.2 GPM)       |
| Maximum working pressure          | 320 Bar (4570 PSI)        |
| Spring cracking pressure          | 0.15 Bar (2.14 PSI)       |
| Ambient Temperature Range         | -20°C ~ +50°C             |
| Hydraulic Fluid Temperature Range | -20°C ~ +70°C             |
| Viscosity Range                   | 15~400 mm <sup>2</sup> /S |
| Hydraulic Oil                     | ISO VG32, 46, 68          |
| Fluid Cleanliness                 | 25 μm                     |
| Mounting Pattern                  | ISO 4401-AB-03-4-A        |
| Weight                            | 1.0 Kg                    |

**HYDRAULIC CONFIGURATION:**

- MAC-02-W-10



# VACUUM CHECK VALVE

## SANDWICH PLATE DESIGN MAC02 SIZE 6

ORDERING CODE :

M AC - 02 - W - 10 - \*\*

**1** **2** **3** **4** **5** **6**

**1** SANDWICH PLATE DESIGN

**2** VACUUM CHECK VALVE

**3** NOMINAL VALVE SIZE:

NG 6, CETOP 3 and ISO 4401-03 (NFPA-D03/DIN 24340)

**4** CONFIGURATION

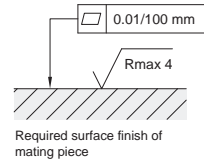
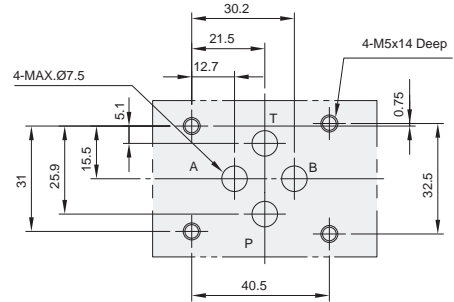
W: double; be incorporated between A, B port and T port

**5** DESIGN NUMBER

**6** OPTIONAL INQUIRY

### INSTALLATION DIMENSIONS:

(Machined valve mounting face with position of ports)

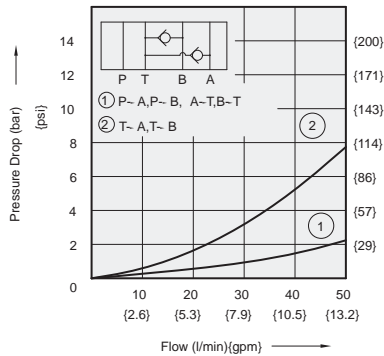


### PERFORMANCE CURVES:

Viscosity of Hydraulic Fluid: 32 mm<sup>2</sup>/s

#### Pressure Drop Characteristic

■ MAC-02-W-10



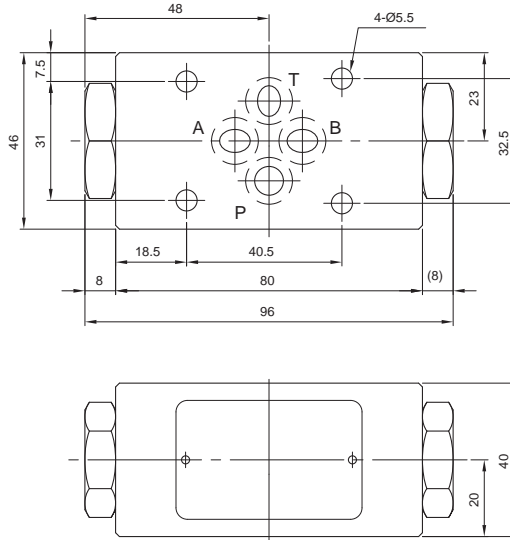
# VACUUM CHECK VALVE

## SANDWICH PLATE DESIGN MAC02 SIZE 6

DIMENSIONS :

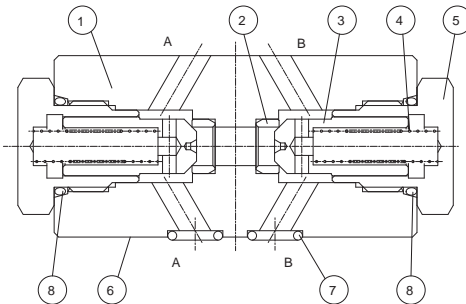
■ MAC-02-W-10

3rd angle  
projection



### CROSS SECTION DRAWING :

■ MAC-02-W-10



1. Body
2. Seat
3. Poppet
4. Spring
5. Nut
6. Connections to DIN 24340 from A6;  
valve fixing screws M5x85 DIN 912-10.9  
tightening torque 8-9 Nm
7. O-ring 1B-P9  
for ports A, B, P and T
8. O-ring 1B-P18