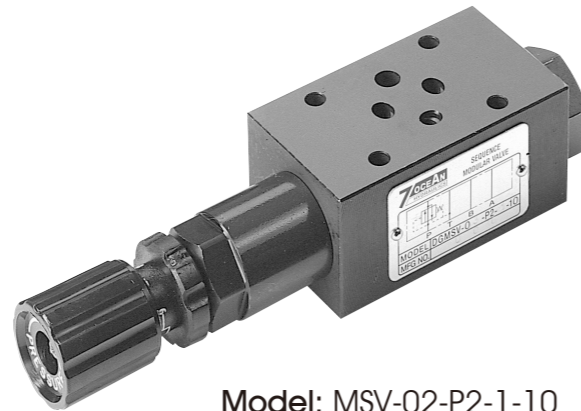


**PRESSURE SEQUENCE VALVE**  
SANDWICH PLATE DESIGN MSV02 SIZE 6

FEATURES :

- Highest performance in NG 6.
- Direct operated pressure sequence valve
- Sandwich plate design
- 2 Pressure adjusting ranges
- Connections to DIN, ISO and CETOP



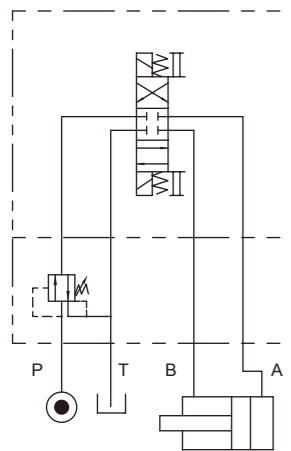
Model: MSV-02-P2-1-10

SPECIFICATION :

Maximum Flow Rate	40 l/Min (10.6 GPM)
Maximum working pressure	320 Bar (4570 PSI)
Pressure Adjusting Range	1: 8~70 Bar
	3: 35~210 Bar
Ambient Temperature Range	-20°C~+50°C
Hydraulic Fluid Temperature Range	-20°C~+70°C
Viscosity Range	15~400 mm <sup>2</sup> /S
Hydraulic Oil	ISO VG32, 46, 68
Fluid Cleanliness	25 μm
Mounting Pattern	ISO 4401-AB-03-4-A
Weight	1.3 kg

HYDRAULIC CONFIGURATION:

- MSV-02-P2-\*-10



**PRESSURE SEQUENCE VALVE**  
SANDWICH PLATE DESIGN MSV02 SIZE 6

ORDERING CODE :

M SV - 02 - P 2 - 1 - 10 - \*\*  
1 2 3 4 5 6 7 8

1 SANDWICH PLATE DESIGN

2 PRESSURE SEQUENCE VALVE

3 NOMINAL VALVE SIZE:

NG 6, CETOP 3 and ISO 4401-03 (NFPA-D03/DIN 24340)

4 CONTROL PORT

P: P port

5 CONTROL TYPE

2: internal pilot, external drain

6 PRESSURE ADJUSTING RANGE

1: 8~70 Bar

2: 35~210 Bar

7 DESIGN NUMBER

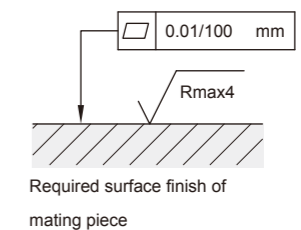
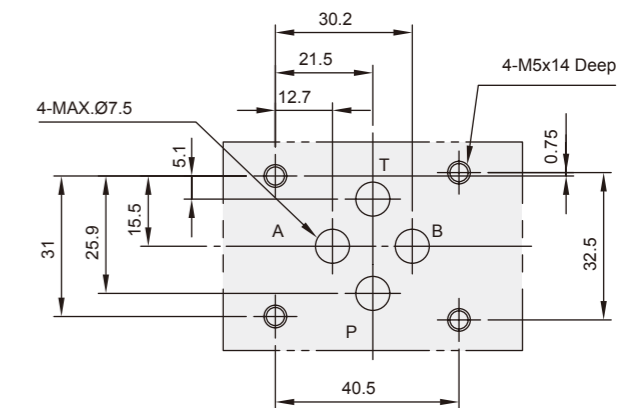
10: with handle

20: without handle

8 OPTIONAL INQUIRY

INSTALLATION DIMENSIONS:

(Machined valve mounting face with position of ports)



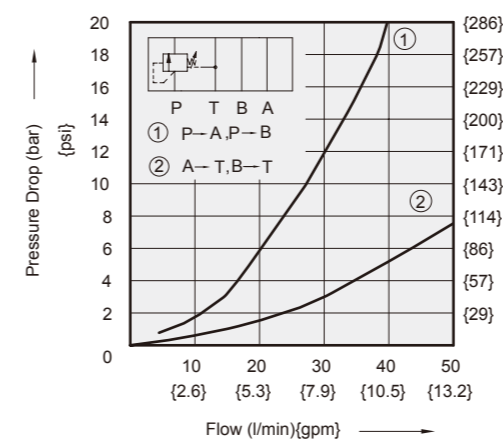
Required surface finish of mating piece

PERFORMANCE CURVES:

Viscosity of Hydraulic Fluid: 32 mm<sup>2</sup>/s

Pressure Drop Characteristic

- MSV-02-P2-\*-10



Regulated Pressure Versus Flow Diagram

- MSV-02-P2-\*-10

